



---

# PARK RIDGE

---

A p a r t m e n t s

P

ark Ridge. Carefully planned apartment living that offers a unique combination not likely to be duplicated in St. Louis: Prime suburban living space surrounded by restaurants and shopping centers, conveniently located near Interstates 70 and 270. Park Ridge reflects an elegance true to the vision of all Gannon Properties. All apartments homes are cable ready and feature spacious one, two and three bedroom units, complete with private balconies and all modern facilities: Frost free refrigerator, dishwasher and ceiling fans.



# Other Amenities

 24 Hour Emergency Maintenance Service

 Sparkling Swimming Pool

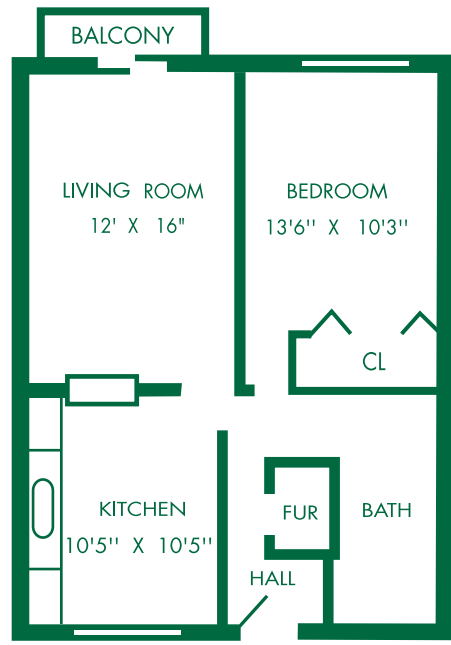
 Private Parking Garages (optional)

 Public Transportation Conveniently Located

 On Site Laundry Facilities

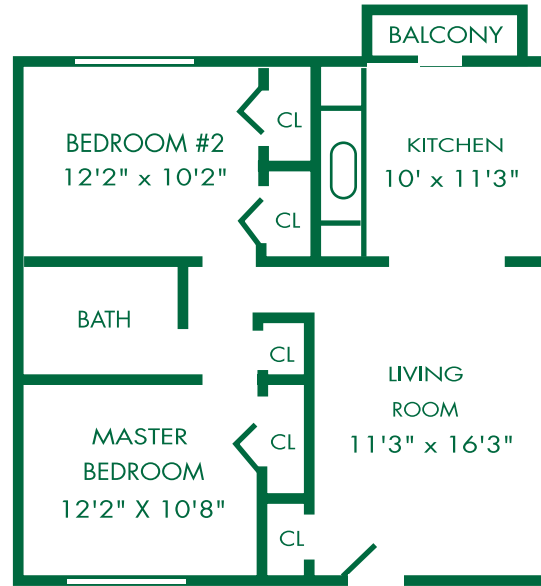
 Oats Bus, Jolley Trolley and Meals on Wheels services available

**P**ark Ridge



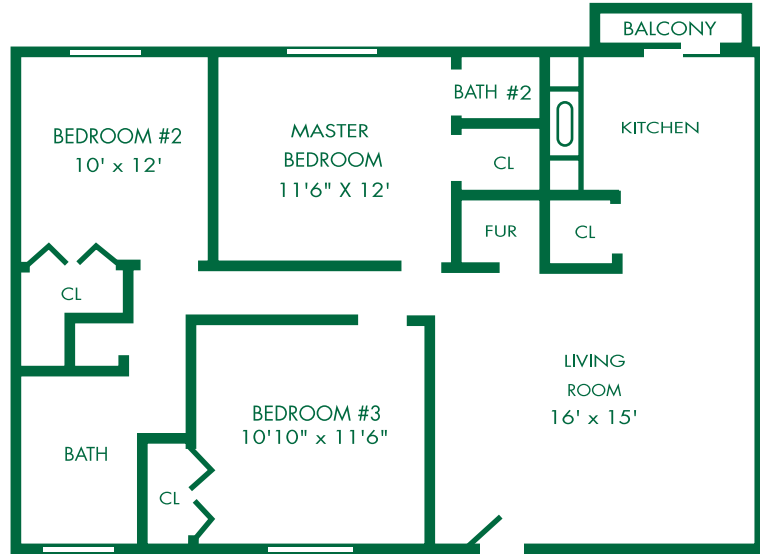
One Bedroom/One Bath  
600 sq.ft.

# Park Ridge



Two Bedroom/One Bath  
800 sq.ft.

# Park Ridge



Three Bedroom/One and One Half Bath  
1000 sq.ft.

# Site Plan





# PARK RIDGE

Apartments

1379 Sharondale Circle  
St. Louis, Missouri 63135



Phone: (314) 524-3635  
Fax: (314) 524-2844

**G|A|N|N|O|N**  
The Gannon Management  
Company of Missouri